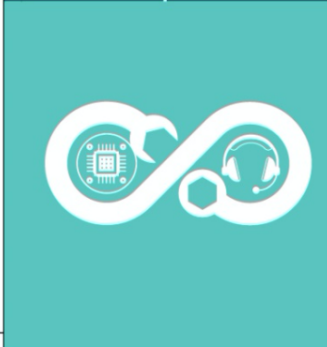
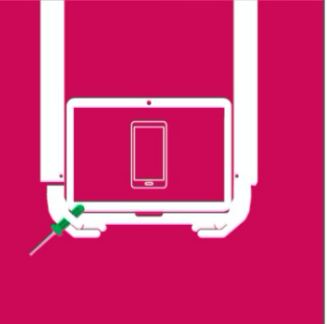
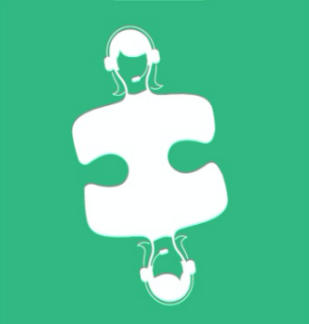
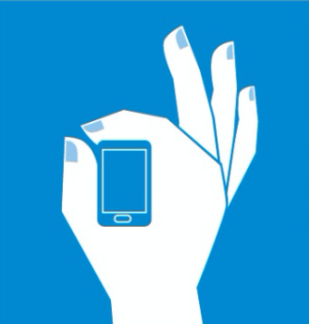
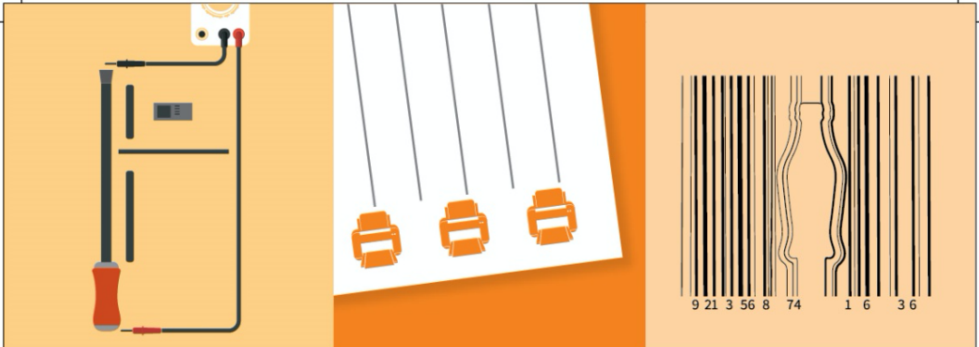


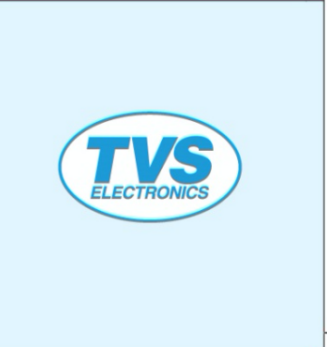


# DAIRY 2020

31 10 19



WELCOME  
2020.  
WELCOME  
CHANGE.



# CHANGE.

The only constant in the universe.

Change allows us to evolve, keeps us diligent and responsible, and ensures that we deliver on time, every time

Change gives us motive, to do better, to stay up to date, to understand what our customers need, giving us the impetus to look future-forward.

Because, as we understand it, resisting change, only makes us fall behind.

Which is why, our products are at the cutting-edge. Our services, remain unparalleled. And our systems, they don't just raise the bar, they set the standard for others to follow.

We invite you to be a part of this journey of change. And hope that this calendar serves as a constant reminder, of the change that we have embraced and the shape of things to come in 2020 and beyond.





#### REGISTERED OFFICE

Jayalakshmi Estates,  
No.29, Haddows Road,  
Nungambakkam,  
Chennai 600 006  
Ph: 044 2827 2233

#### HEAD OFFICE

TAMIL NADU  
TVS ELECTRONICS LIMITED  
No. 117/1, 8th & 9th Floor,  
L.B. Road, Adyar, Chennai 600 020  
Ph: 044 4200 5200

#### FACTORY

No. E12, Selaqui Industrial Area,  
Dehradun, Uttarakhand 248 197  
Ph: 0135 2698662/3

Pandithanahalli Hirehalli (PO)  
Tumkur, Karnataka 572 168  
Ph: 0816 2243722

#### BRANCH OFFICES

##### BANGALORE

Ph: 98805 00662,  
97310 33886

##### DELHI

Ph: 90878 68425,  
90878 68424

##### HYDERABAD

Ph: 040 2781 6667

##### KOCHI

Ph: 0484 4000534

##### MUMBAI

Ph: 90878 68423

##### KO L KATA

Ph: 90878 68420

Sales / Product Enquiry:

**+91 44 6688 8822**

Email: sales-support@tvs-e.in

Customer Care:

**+91 44 6688 8888**

Email: support@tvs-e.in

WhatsApp: **+91 74488 04201**

[www.tvs-e.in](http://www.tvs-e.in)

## PERSONAL INFORMATION

Name: \_\_\_\_\_

Mobile No.: \_\_\_\_\_

Aadhaar No: \_\_\_\_\_

Passport No: \_\_\_\_\_

Business/ Residence Address: \_\_\_\_\_

\_\_\_\_\_

\_\_\_\_\_

\_\_\_\_\_

Telephone: \_\_\_\_\_

In case of emergency, please contact:

Name: \_\_\_\_\_

Mobile: \_\_\_\_\_

\_\_\_\_\_

\_\_\_\_\_

Important events:

\_\_\_\_\_

\_\_\_\_\_

\_\_\_\_\_





TVS-E  
assure



CHANGING THE WAY  
YOU EXPERIENCE CUSTOMER-SATISFACTION



EXTENDED  
WARRANTY



ONE TIME SCREEN  
REPLACEMENT

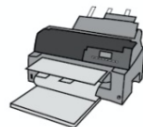


ACCIDENTAL DAMAGE  
AND LIQUID DAMAGE





**HELPING THE BANKING INDUSTRY  
CHANGE WITH THE TIMES**



**HI-SPEED DMP**



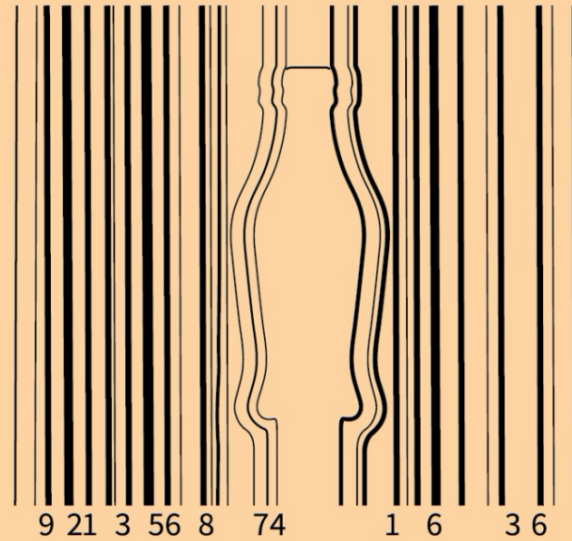
**DOT MATRIX  
PRINTERS**



**PASS BOOK  
PRINTERS**



**GOLD KEYBOARD**



**ENABLING CHANGE  
ACROSS THE RETAIL ECO-SYSTEM**



**TOUCH POS**



**BARCODE  
SCANNER**



**THERMAL RECEIPT  
PRINTER**



**ELECTRONIC  
CASH REGISTER**



**POS DMP**



**CASH  
DRAWER**



**DOT MATRIX  
PRINTER**



ENSURING CHANGE AT  
EVERY LEVEL OF THE SUPPLY CHAIN



SOURCING



PLANNING



PROCUREMENT



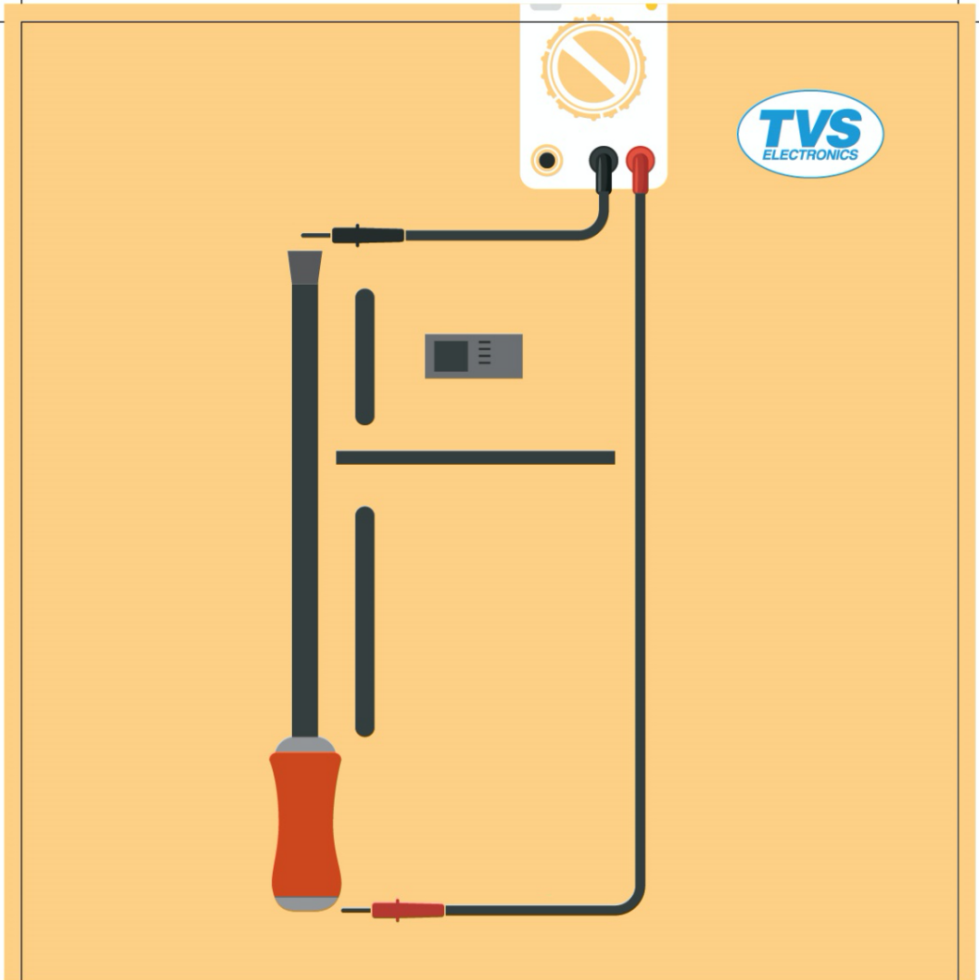
MANUFACTURING



DELIVERY &  
LOGISTICS



PRODUCT &  
PROCESS QUALITY



**CHANGING AFTER-SALES SERVICE  
STANDARDS FOR END-CONSUMERS**



INSTALLATION



DEMO



GIVING E-AUCTIONING  
A CHANGE OF PERSPECTIVE



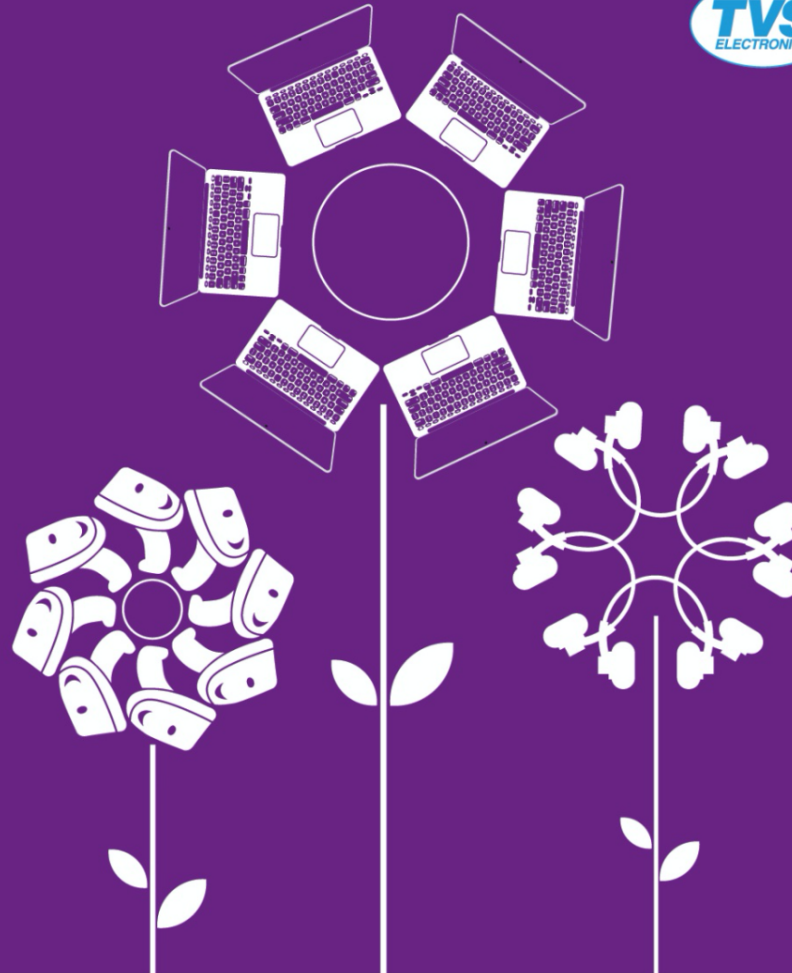
PROCUREMENT



DISPOSAL



E-WASTE



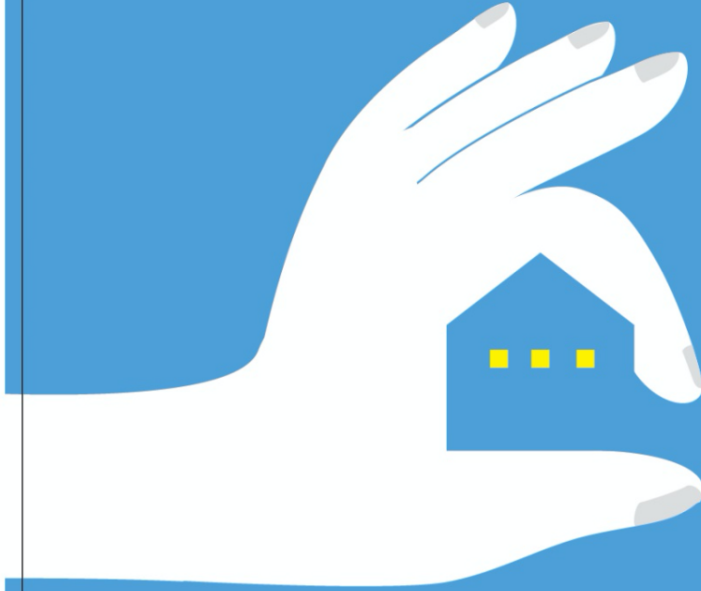
**CHANGING THE ENVIRONMENT  
FOR THE BETTER, WITH E-RECYCLING**



**CHANGING HOW BUSINESSES  
DELIVER SERVICE TO THEIR CUSTOMERS**



**CALL CENTRE SUPPORT**



**CHANGING STANDARDS OF EXCELLENCE  
FOR THE WAREHOUSING AND LOGISTICS INDUSTRIES**

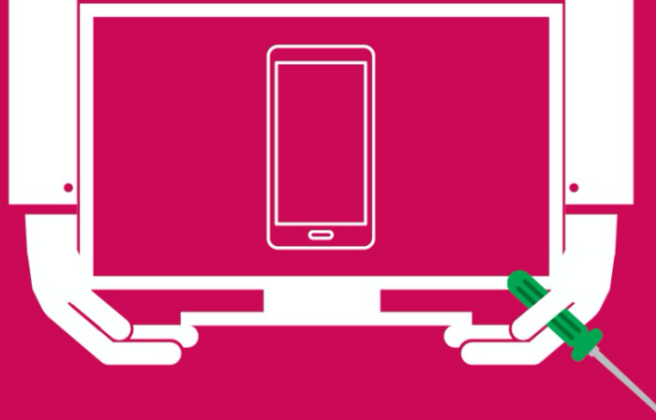


**HANDHELD  
TERMINAL**



**LABEL PRINTERS**





**CONTINUOUSLY CHANGING AND  
REVOLUTIONISING SERVICE AND REPAIR**



**WALK-IN SERVICES**



**ONSITE REPAIR**



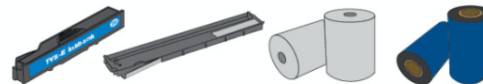
**RESIDENT  
ENGINEER**



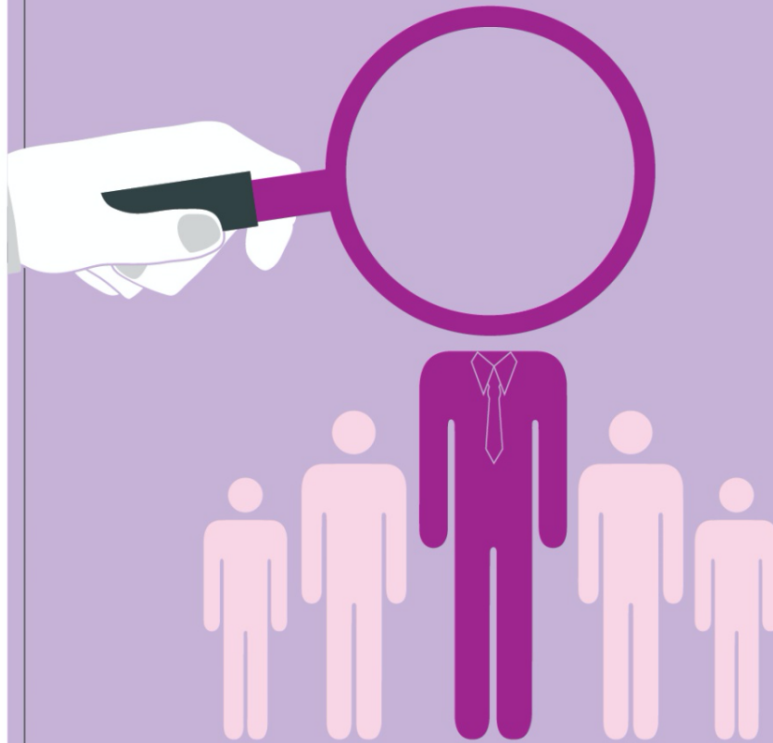
CHANGING THE WAY  
YOUR PRODUCTS ARE CARED FOR



EXTENDED WARRANTY  
FOR TVSE PRODUCTS



TVSE GENUINE CONSUMABLES



**BRINGING TOGETHER THE BRIGHTEST MINDS  
TO HELP CHANGE THE FUTURE**



**320+**  
WALK-IN  
CENTER



**15000+**  
PINCODE SERVICED



**120**  
SEAT MULTI-  
LANGUAGE  
CALL CENTER

**55**  
COLLECTION  
POINTS



**1**  
REPAIR  
CENTER

**13**  
BRANCH  
OFFICES



**13**  
WAREHOUSES



**480+**  
SERVICE PARTNERS

**5000+**  
FEET ON STREET

### A FUTURISTIC NETWORK BUILT FOR SERVICE, WITHIN YOUR REACH

TVS-E has proven the capability of PAN India reach and last mile connect, which has further strengthened our position as the most trusted technical support solutions provider